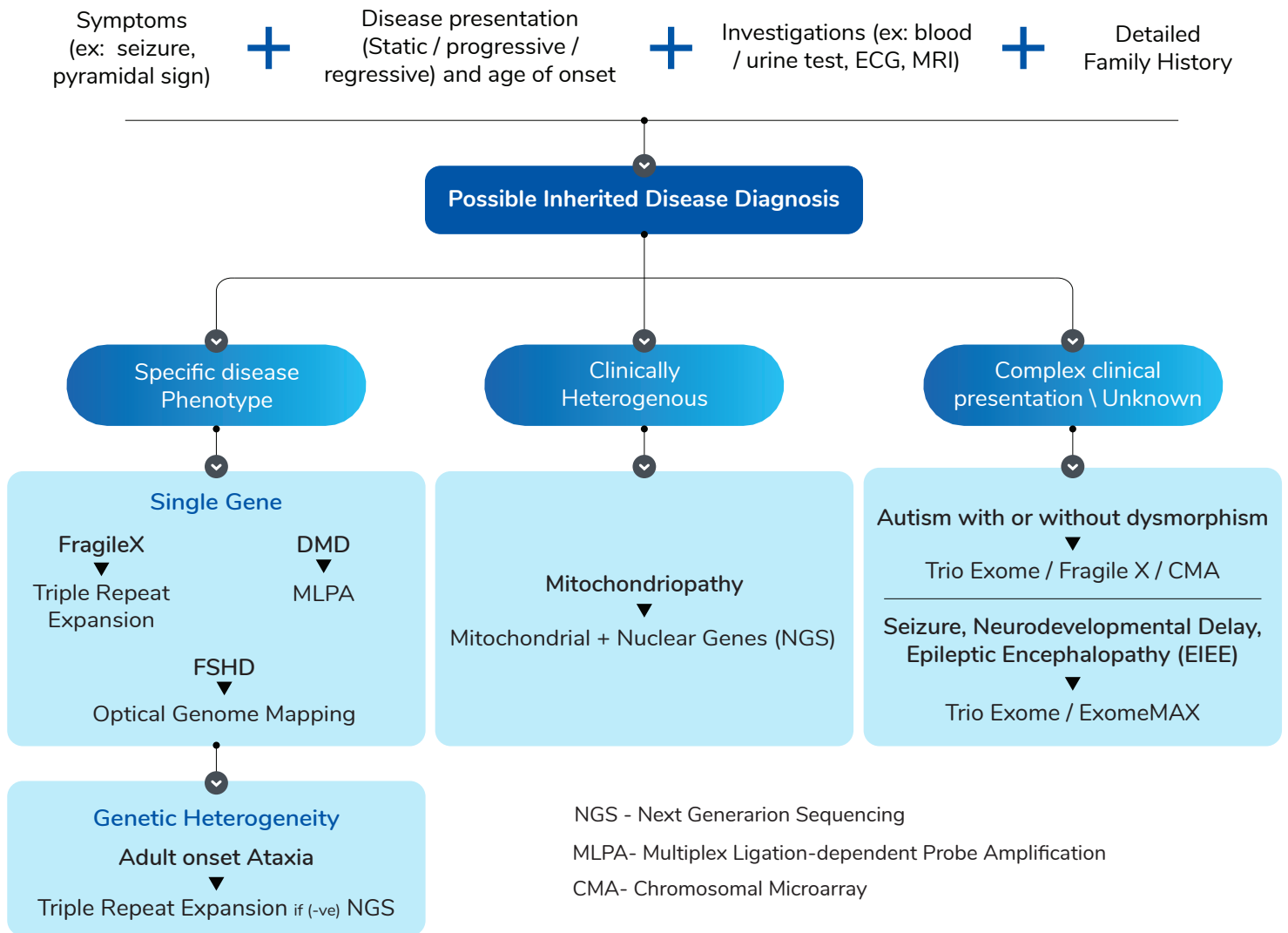




## Clinical Evaluation



## Test Details

Test Code	Test Name	Methodology
MGM148	Comprehensive neurology panel	NGS
MGM141	Muscular dystrophy and congenital myopathy gene panel	NGS
MGM136	Duchenne Muscular Dystrophy (DMD) deletion / duplication analysis	MLPA
MGM287	Spinocerebellar ataxia repeat expansion analysis: SCA1, SCA2, SCA3, SCA6, SCA7, SCA10, SCA12	Fragment Analysis
MGM111	Dravet syndrome (SCN1A) deletion / duplication analysis	MLPA
MGM163	Tay-Sachs disease (HEXA) deletion / duplication analysis	MLPA
MGM1056	NeuroMit (Whole mitochondrial genome sequencing & Neurology gene panel)	Combo Test
MGM125	Dystonia gene panel	NGS
MGM124	Ataxia-telangiectasia (ATM) gene analysis	NGS
MGM158	NOTCH3 (CADASIL) gene analysis	NGS

Talk to the Experts:

1800 103 3691 
 [techsupport@medgenome.com](mailto:techsupport@medgenome.com)
[www.medgenome.com](http://www.medgenome.com)

Follow us on  
**LinkedIn**

