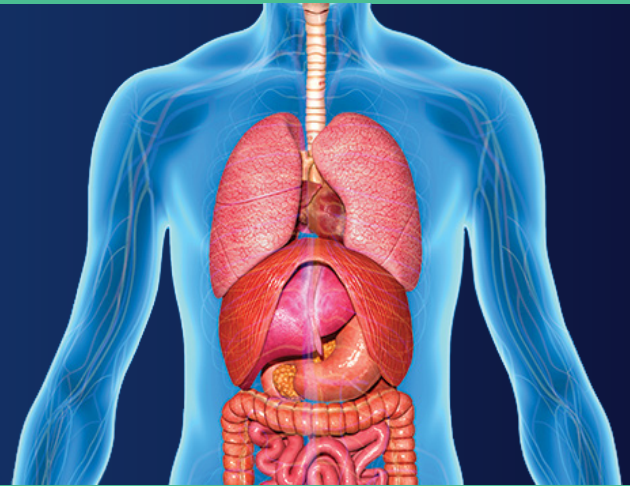


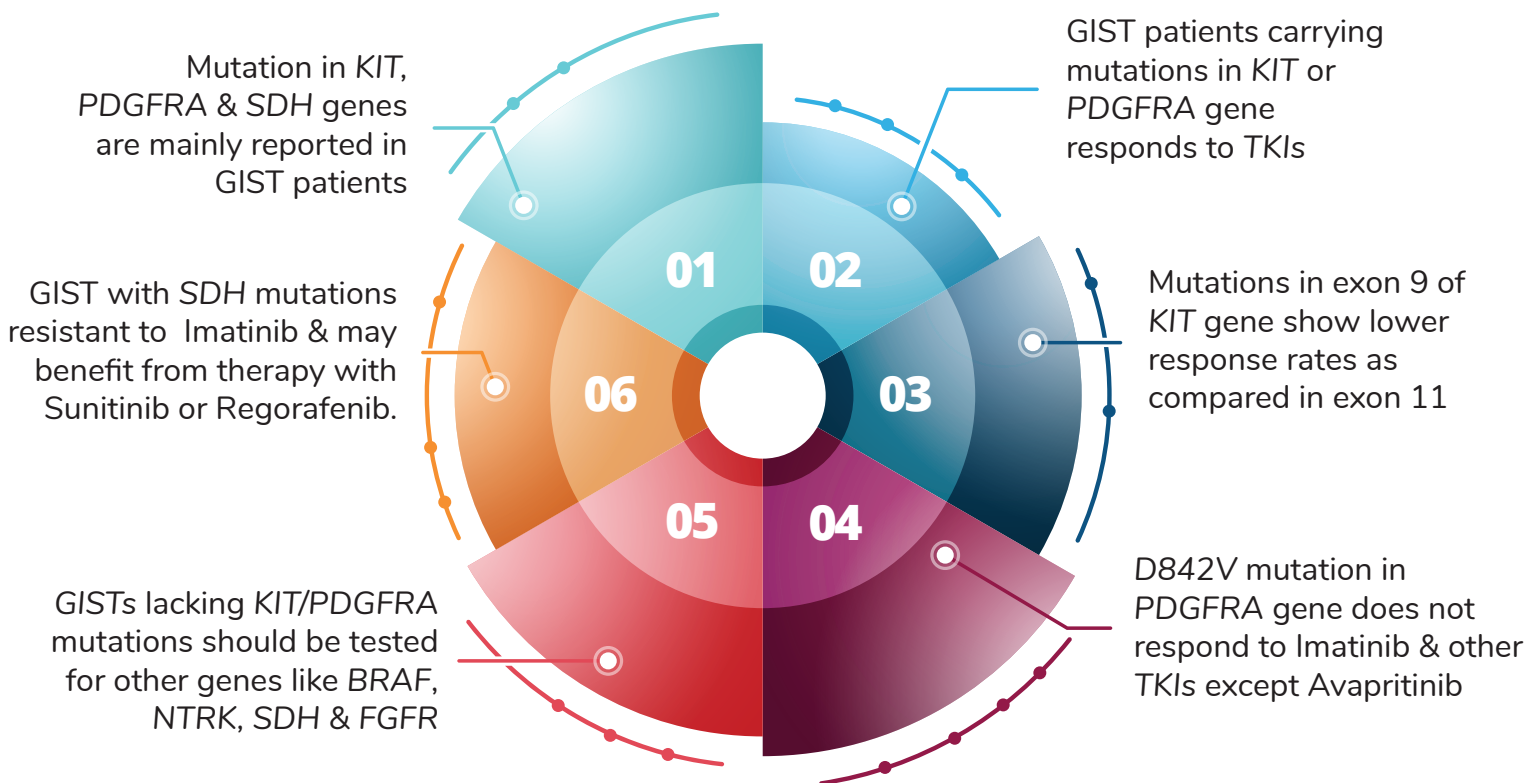


Gastrointestinal Stromal Tumors (GIST) Panel

Next Generation Sequencing test to screen actionable gene mutations as per NCCN guidelines

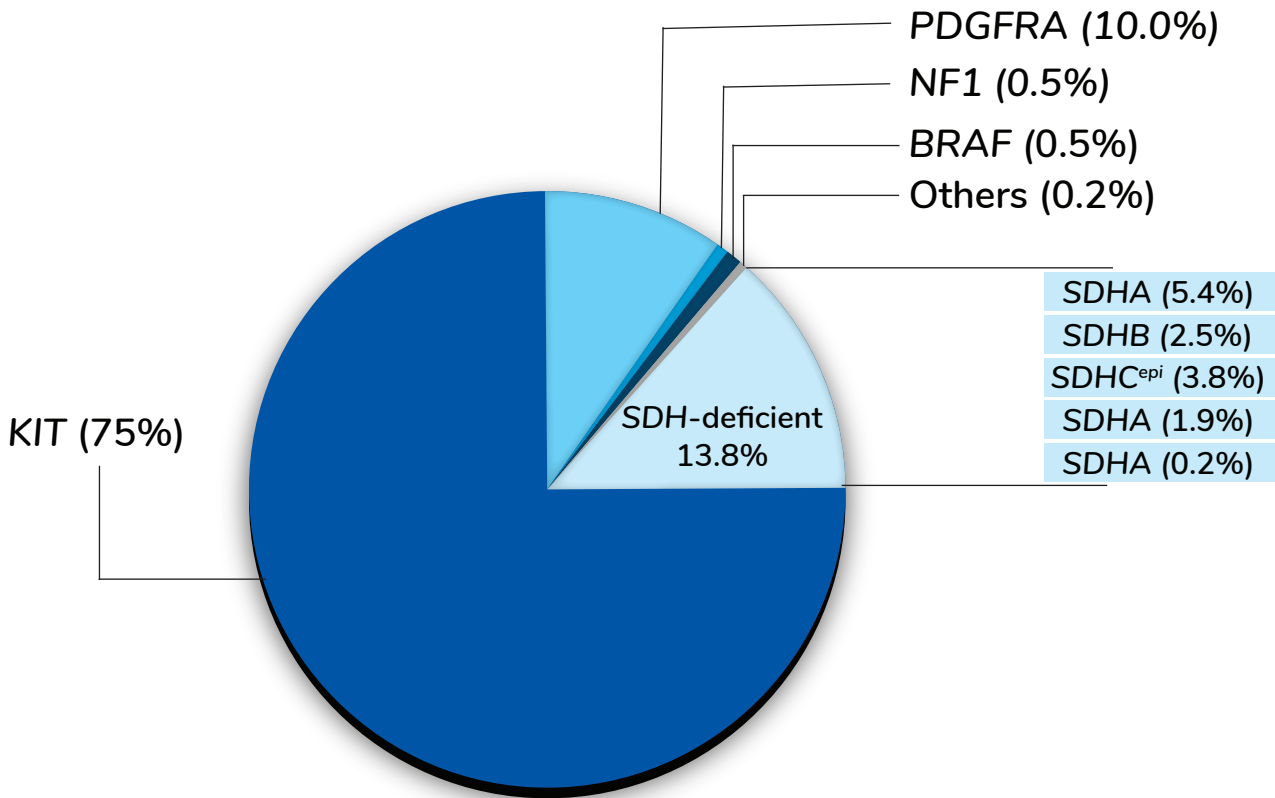


Gastrointestinal stromal tumors (GISTs) are rare mesenchymal neoplasms of the gastrointestinal tract.



Genetic counseling is recommended for all patients with *SDH* or *NF1* mutations to understand germline predisposition.

Mutational Landscape



Test Details

Test Name	Test Code	TAT
GIST (Gastrointestinal Stromal Tumor) SNVs, InDels & Fusions	MGM333	21 Working days

Gene List

SNVs & InDels	BRAF	KIT	NF1	PDGFRA	SDHA	SDHB	SDHC	SDHD	SDHAF2
Fusions	NTRK1	NTRK2	NTRK3	FGFR1	FGFR2	FGFR3			

Assay Specifications

Specimen types	FFPE Tissue Block / Cytology Cell Block, Tissue in RNA later*
FFPE block requirement*	Cross-sectional tumor area of 25mm ² containing at least 40 µm of tumor tissue. Histopathology report
Tumor purity	Minimum 10% (as determined by Molecular Pathologist)
Limit of detection	5% VAF for SNV and InDels >10 Spanning Reads for Fusions
Average depth of sequencing	>250X
Analytical sensitivity	99.15% (SNVs/InDels); 98% Fusions
Analytical specificity	99.9%

*Tumor Cellularity can not be determined for tissue in RNA later samples | VAF : Variant Allele Frequency